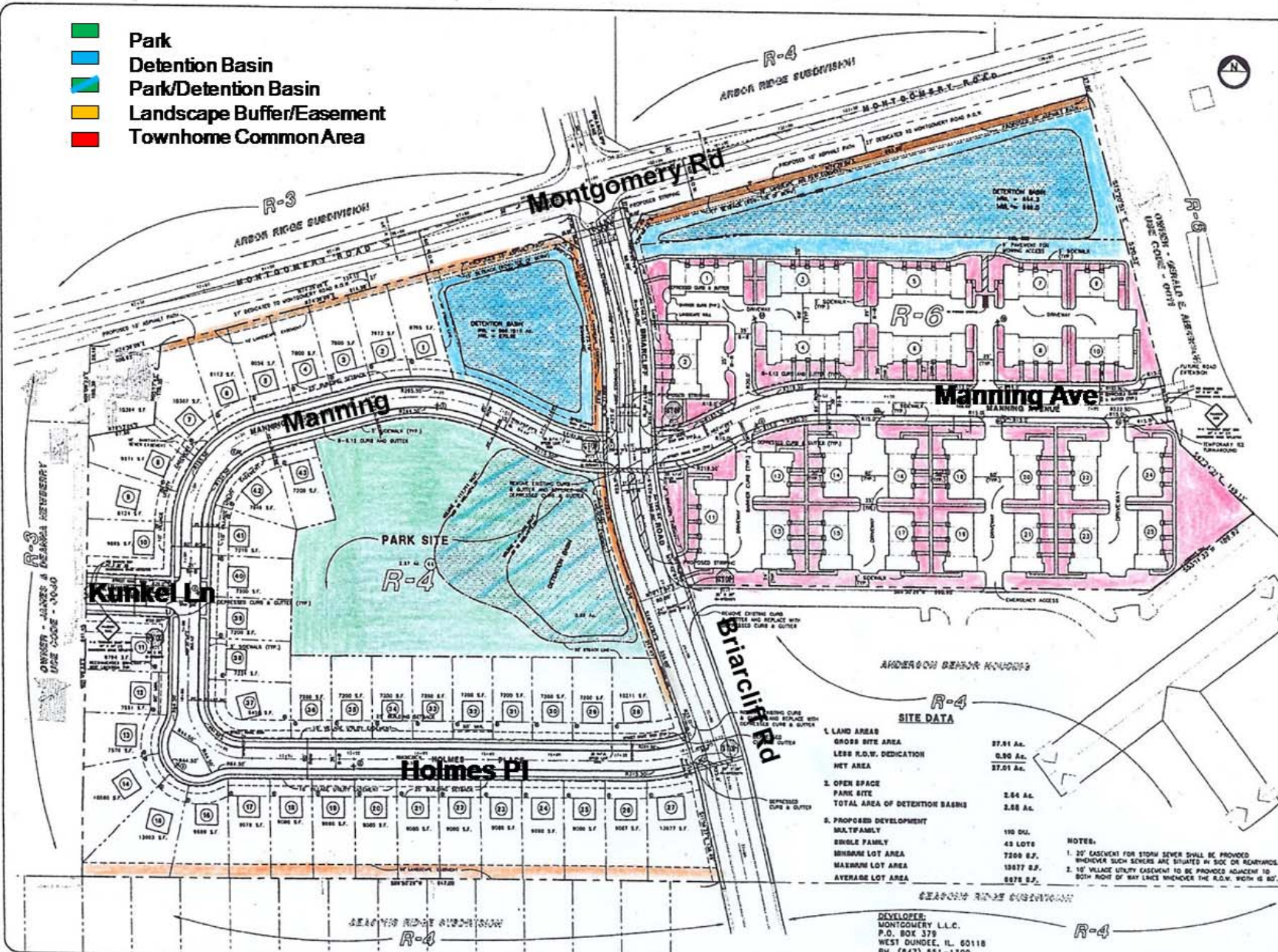


- Park
- Detention Basin
- Park/Detention Basin
- Landscape Buffer/Easement
- Townhome Common Area



SITE DATA

1. LAND AREAS	
GROSS SITE AREA	27.91 AC.
LESS R.O.W. DEDICATION	0.90 AC.
NET AREA	27.01 AC.
2. OPEN SPACE	
PARK SITE	3.64 AC.
TOTAL AREA OF DETENTION BASINS	3.68 AC.
3. PROPOSED DEVELOPMENT	
SINGLE FAMILY	110 DU.
MULTIFAMILY	43 LOTS
SINGLEHOM LOT AREA	7200 S.F.
MAXIMUM LOT AREA	15877 S.F.
AVERAGE LOT AREA	8876 S.F.

- NOTES:**
1. 20' EASEMENT FOR STORM SEWER SHALL BE PROVIDED WHICHEVER SUCH SEWERS ARE SITUATED IN SHOC OR REARWAYS.
 2. 10' VILLAGE UTILITY EASEMENT TO BE PROVIDED ADJACENT TO BOTH RIGHT OF WAY LINES WHICHEVER THE R.O.W. WIDTH IS 80'.

DEVELOPER:
MONTGOMERY L.L.C.
P.O. BOX 379
WEST DUNDEE, IL. 60118
PH. (647) 551-1300

REVISIONS

NO.	DATE	DESCRIPTION
1	02/10/2000	ISSUED FOR PERMITS
2	02/10/2000	REVISIONS TO PERMITS
3	02/10/2000	REVISIONS TO PERMITS
4	02/10/2000	REVISIONS TO PERMITS
5	02/10/2000	REVISIONS TO PERMITS
6	02/10/2000	REVISIONS TO PERMITS
7	02/10/2000	REVISIONS TO PERMITS
8	02/10/2000	REVISIONS TO PERMITS
9	02/10/2000	REVISIONS TO PERMITS
10	02/10/2000	REVISIONS TO PERMITS

IC CONSULTING, INC.
 500 MONTEGOMERY AVENUE, SUITE 200
 MONTGOMERY, ILLINOIS 60118
 PHONE: (647) 551-1300 FAX: (647) 551-1377
 DESIGN: K.A.B. DRAFTING: G.F.
 SCALE: 1" = 80' DATE: 02/10/2000
 GENERAL, SITEWORK AND SERVICE PLAN

**FIELDSTONE PLACE RESIDENTIAL DEVELOPMENT
MONTGOMERY, ILLINOIS**